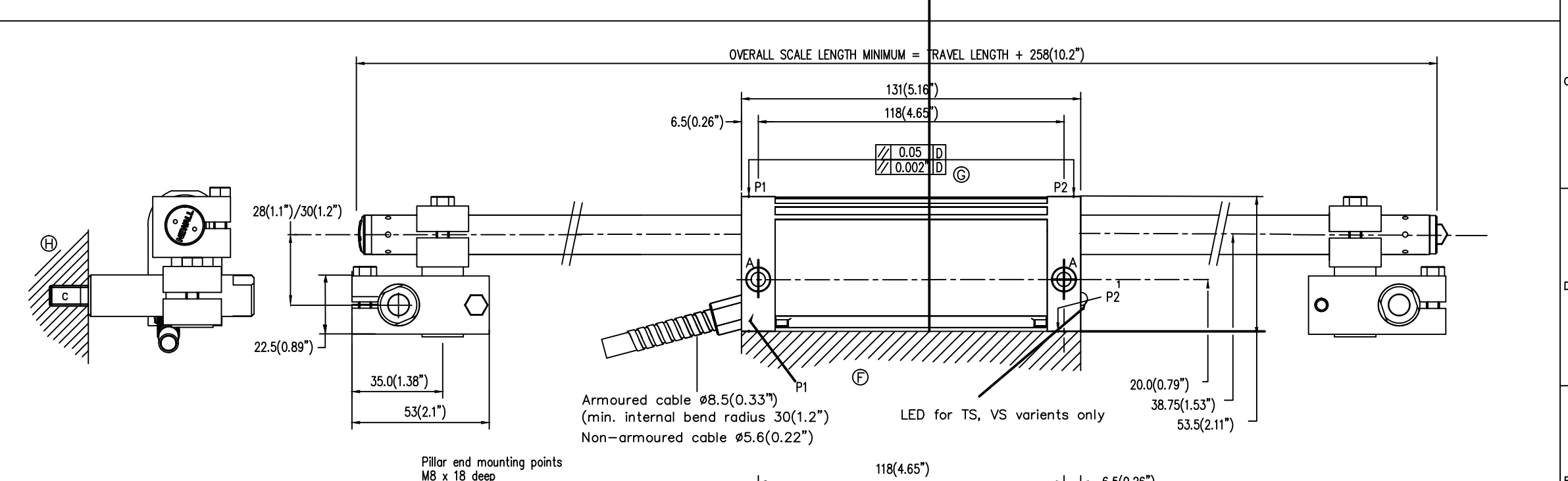
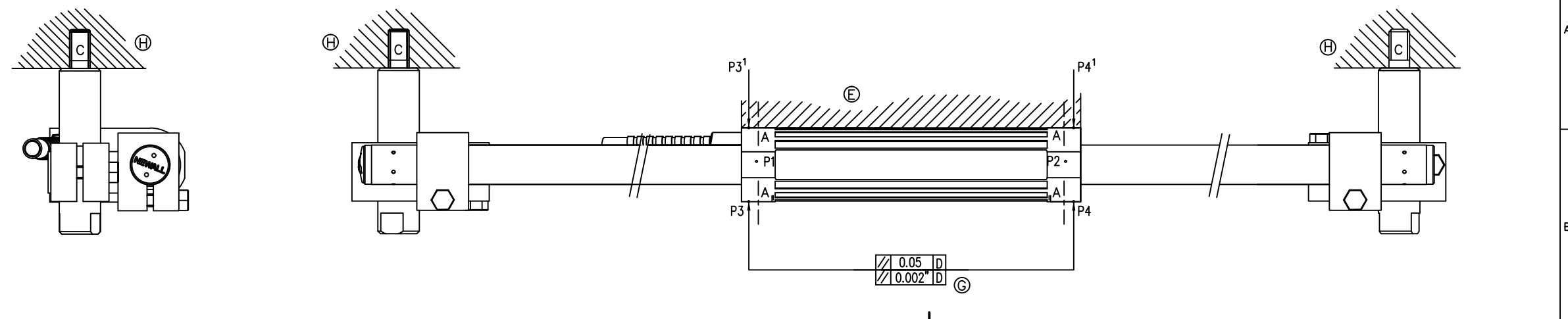
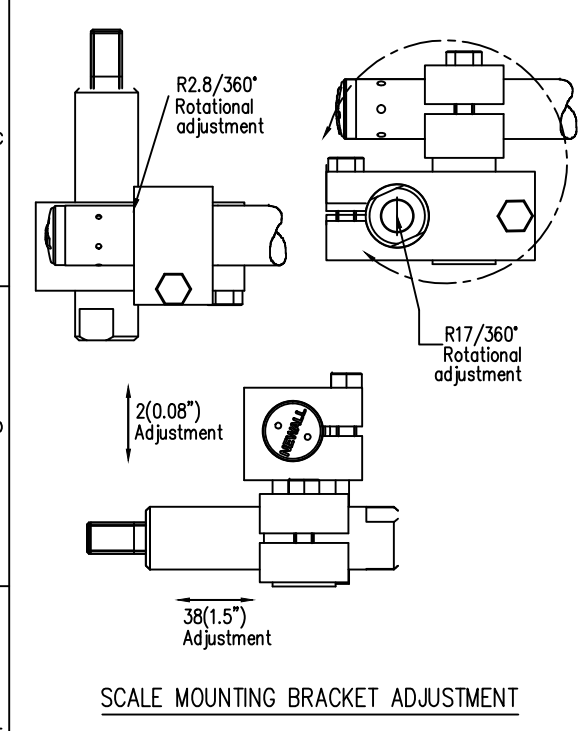
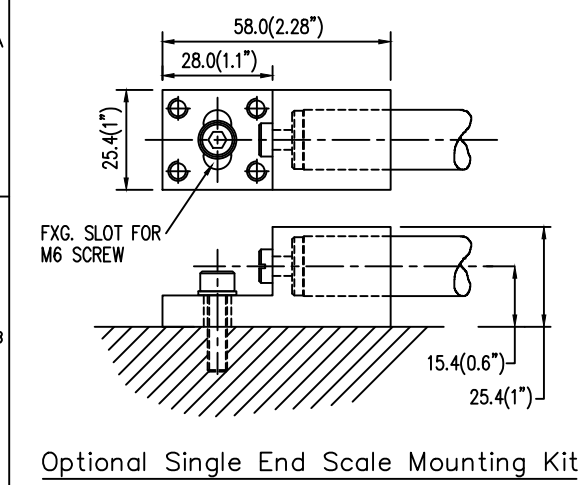


DRAWING NUMBER 316-87290 REV. ISS. 0

DO NOT SCALE THIRD ANGLE PROJECTION IF IN DOUBT ASK



- A - Encoder head mounting points 2off for M5 cap head screws (clearance holes through).
- B - Encoder head mounting points 2off for M5 screws (thread depth 12).
- C - Scale pillar mounting studs M8 x 15 (use spacer washer as required).
- D - Machine Guideway.
- E/F - Encoder head mounting faces.
- G - Indicating parallel alignment required between encoder head and axis travel.
- H - Scale end mounting points to machine bed.
- P - Installation alignment points.

DIMENSIONS - mm (ins")
FOR FURTHER INFORMATION REFER TO INSTALLATION MANUAL

REV. ISS. DATE C.N.No. ALTERATION				REV. ISS. DATE C.N.No. ALTERATION				TITLE DIMENSIONAL DETAILS for SHG-TT, SHG-PV, SHG-TS, SHG-VP and SHG-VS Encoders (<100")		MATERIAL/ FINISH		SCALE 1=1		UNLESS OTHERWISE TOLERANCES:- 0 DECIMAL PLACES ±0.5 1 DECIMAL PLACE ±0.2 2 DECIMAL PLACES ±0.1 ANGULAR ±1'	
REV. ISS. DATE C.N.No. ALTERATION				REV. ISS. DATE C.N.No. ALTERATION				DRAWN C.WHITMORE 25-11-14		CHECKED		SHEET 1 OF 1		DRAWING NUMBER 316-87290 REV. ISS. 0	
1				2				3		4		5		6	
1				2				3		4		5		6	

Leicester **NEWALL** England

THIS DRAWING IS THE PROPERTY OF NEWALL MEASUREMENT SYSTEMS LIMITED. THE INFORMATION THEREON MAY NOT BE COPIED OR USED WITHOUT WRITTEN PERMISSION